

Standard accessories:

- Round polyester filter
- Manual filter cleaning system
- Automatic filter cleaning
- Traction drive hydrostatic
- Adjustable roller brush
- Floating main roller brush
- Adjustable suction power
- Bulk waste flap
- Overthrow sweeping principle
- Travel drive - forward
- Travel drive
- reverse
- Vacuum
- Hydraulic container lift
- Outdoor applications
- Indoor applications
- Operating hour meter
- Sweep function (can be switched off)
- Pneumatic wheels
- Side brush swings out automatically
- Bumper bar

**Order number: 1.091-107.0****Technical data**

| | |
|---|-------|
| Drive | - |
| Drive – power | - |
| Max. area performance m ² /h | 10000 |
| Working width (mm) | 750 |
| Working width with 1 side brush (mm) | 1000 |
| Working width with 2 side brushes (mm) | 1250 |
| Battery Capacity | - |
| Battery Voltage | - |
| Container (l) | 100 |
| Hill climbing ability (%) | 18 |
| Operating speed (km/h) | 8 |
| Filter area (m ²) | 6 |
| Weight (kg) | 450 |

Vacuum sweepers ride-on

KMR 1250 LPG



Technical data

Weight, ready to operate (kg)

-

Dimensions (L x W x H) (mm)

1650x1000x1270

Accessories

Batteries and chargers for vacuum sweepers with internal combustion engines

Battery

Pre-charged wet cell starter battery for Kärcher sweepers.

Order number 7.654-001.0



Charger

For charging the batteries

Order number 6.654-116.0

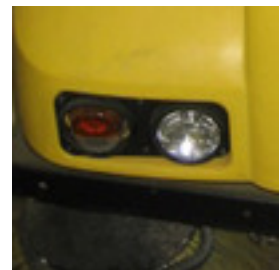


Lighting

ABS StVZO lighting

Prescribed lighting for operation on public roads

Order number 2.638-754.0



Main roller brush, full-house bristles

Main roller brush, full-house bristles

For large amounts of fine sweepings, e.g. sand, indoors and outdoors, moisture-proof

Order number 6.906-251.0



Main roller brush, hard

Main roller brush, hard

Hard main roller brush for removing stubborn, adhering dirt outdoors.

Order number 6.906-018.0



Main roller brush, soft/natural

Main roller brush, soft/natural KMR 1250

Specially designed with natural bristles for sweeping fine dust on smooth floors indoors

Order number 6.906-019.0



Other mounting kits

Reverse travel signal

Sounds warning signal when reversing

Order number 2.638-960.7



Bumper strips

Prevents bump marks on side, hardwood, non-marking

Order number 2.639-077.0



Protective roof for operator with 360° warning beacon

Protective roof for operator with 360° warning beacon

Necessary for operating sweeper in high-bay warehouses. Complies with IEC 60335-2-72

Order number 2.638-777.7



Round filter

Round filter

Moisture-proof, washable single round filter for Kärcher sweepers. Filter noticeably reduces maintenance costs.

Order number 6.414-532.0



Side brush, hard

Side brush, hard

Removes stubborn dirt outdoors, moisture-proof, mildly abrasive

Order number 6.906-065.0



Side brush, soft

Side brush, soft

Sweeps fine dust on all surfaces, moisture-proof, for indoors and outdoors

Order number 6.906-133.0



Side brush, steel bristles

Side brush, steel bristles

For stripping, removing moss, abrasive, for outdoor use only

Order number 6.906-022.0



Sivuharjat

Side brush, left

Complete, incl. standard side brush to increase area swept

Order number 2.638-901.0



Standard main roller brushes

Standard roller brush

Tough standard roller brush with moisture-proof universal bristles for normal soiling on all surfaces. Extremely durable.

Order number 6.905-982.0



Standard side brushes

Standard side brush

Standard side brush with moisture-proof universal bristles for normal soiling on all surfaces. Extremely durable.

Order number 6.905-986.0



Tyres, puncture-proof

Puncture-proof tyres (set), solid rubber

Recommended for sweeping metal shavings, glass shards, etc.

Order number 2.641-133.7



Puncture-proof tyres (front), solid rubber

Recommended for sweeping metal shavings, glass shards, etc.

Order number 6.435-319.0



Vacuum sweepers ride-on

KMR 1250 LPG



Tyres, puncture-proof

Puncture-proof tyres (rear), solid rubber

Recommended for sweeping metal shavings, glass shards, etc.

Order number 6.435-318.0



Warning beacon

360° warning beacon

For increased safety

Order number 2.639-540.0

